



POSSEHL  
ELECTRONICS

[www.possehlelectronics.de](http://www.possehlelectronics.de)

Possehl  
Electronics  
Precision  
in People!





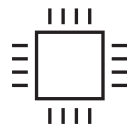
## Can you imagine a world without semiconductors?

Life would be completely different without semiconductors and more comparable to the industrial age, when electronic products – from today's perspective – were relatively simple and light bulbs were stated as cutting-edge technology.

Nowadays "Semicon" is everywhere! Semiconductors are crucial for the performance of almost every industrial application in microelectronics, like automation systems, security technology or controlling sensors, as well as for the functionality of computers, tablets, smartphones or smart speakers

In any case, **Possehl Electronics** is a reliable partner for the challenging tasks in the modern semiconductors industry, today and tomorrow.

# Possehl Electronics is Semicon





**Mobility and transportation has been a basic question of societies for centuries, same today.**

Individual mobility is changing and can only be guaranteed for the near future by a transition of our industry towards environmentally friendly powertrain concepts like e-drives, fuel cells or liquid fuels from renewable sources.

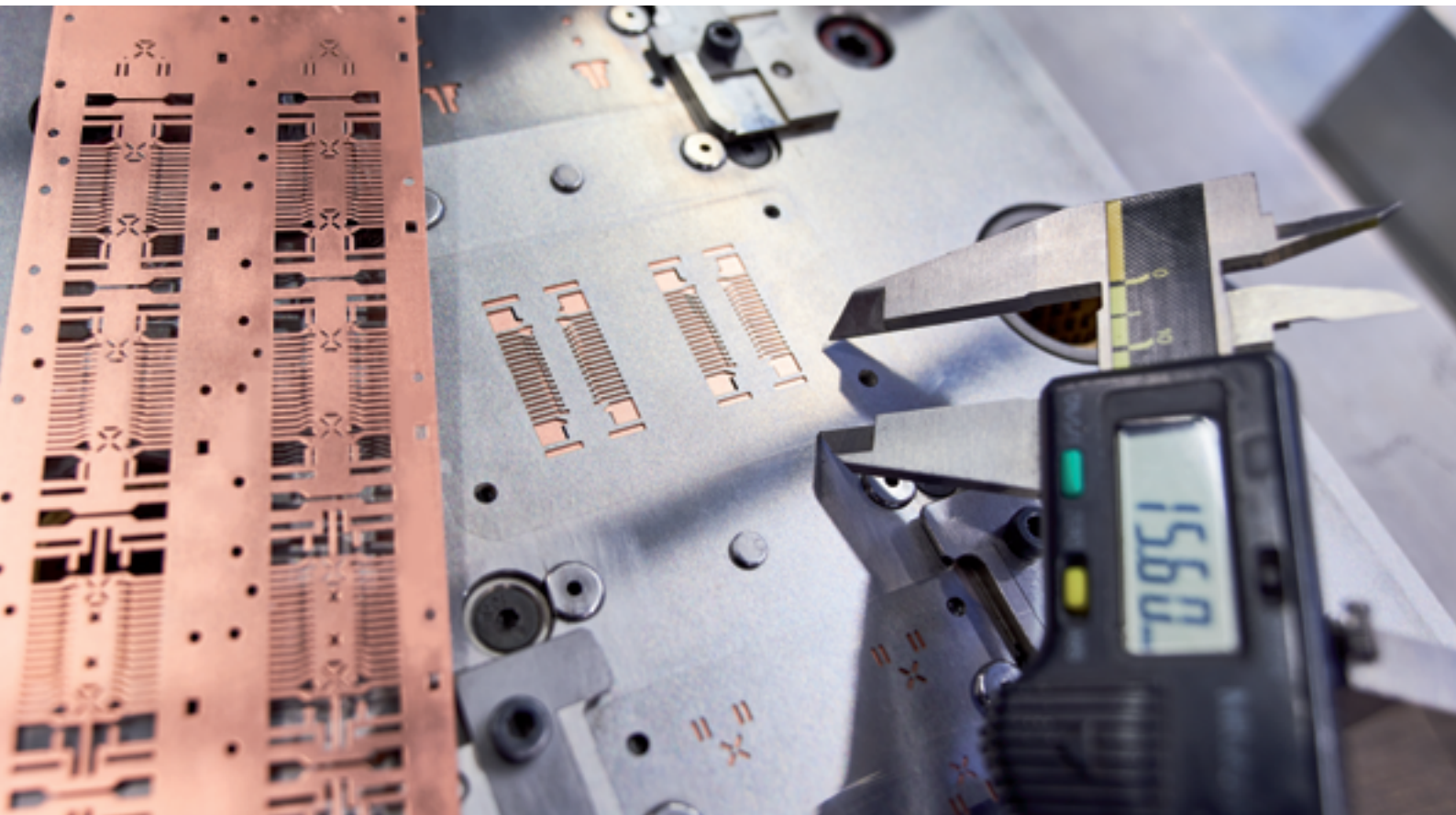
Autonomous driving will optimize transportation, will help to reduce accidents and will lead to completely new business models. Inside and outside the car a lot of additional assistance systems are needed. Therefore, current and future cars will contain a broad range of sensors, actuators, electrical servo motors and communication modules.

**Possehl Electronics** considerably contributes to the upcoming developments and exciting changes within the automotive supply chain by offering dedicated know-how, efficient processes and highly automated production of electronic housing assemblies with connector interfaces.



# Possehl Electronics is Automotive





**The combination of metal and plastics and the assembly of electronic components requires a variety of different technologies, such as stamping, etching, electroplating, injection molding, automated handling and verification processes.**

All these technologies are unified in one company: **Possehl Electronics**. Our concept of being a “one stop shop” reduces interfaces and processing times drastically, giving our customers a great benefit in terms of time, quality and reliability.

In order to reach this goal, we start to match processes at a very early stage within the product development process. We focus on the expertise of our engineers and rely on our experts in tooling. We insist on using the very best automation equipment in our production.

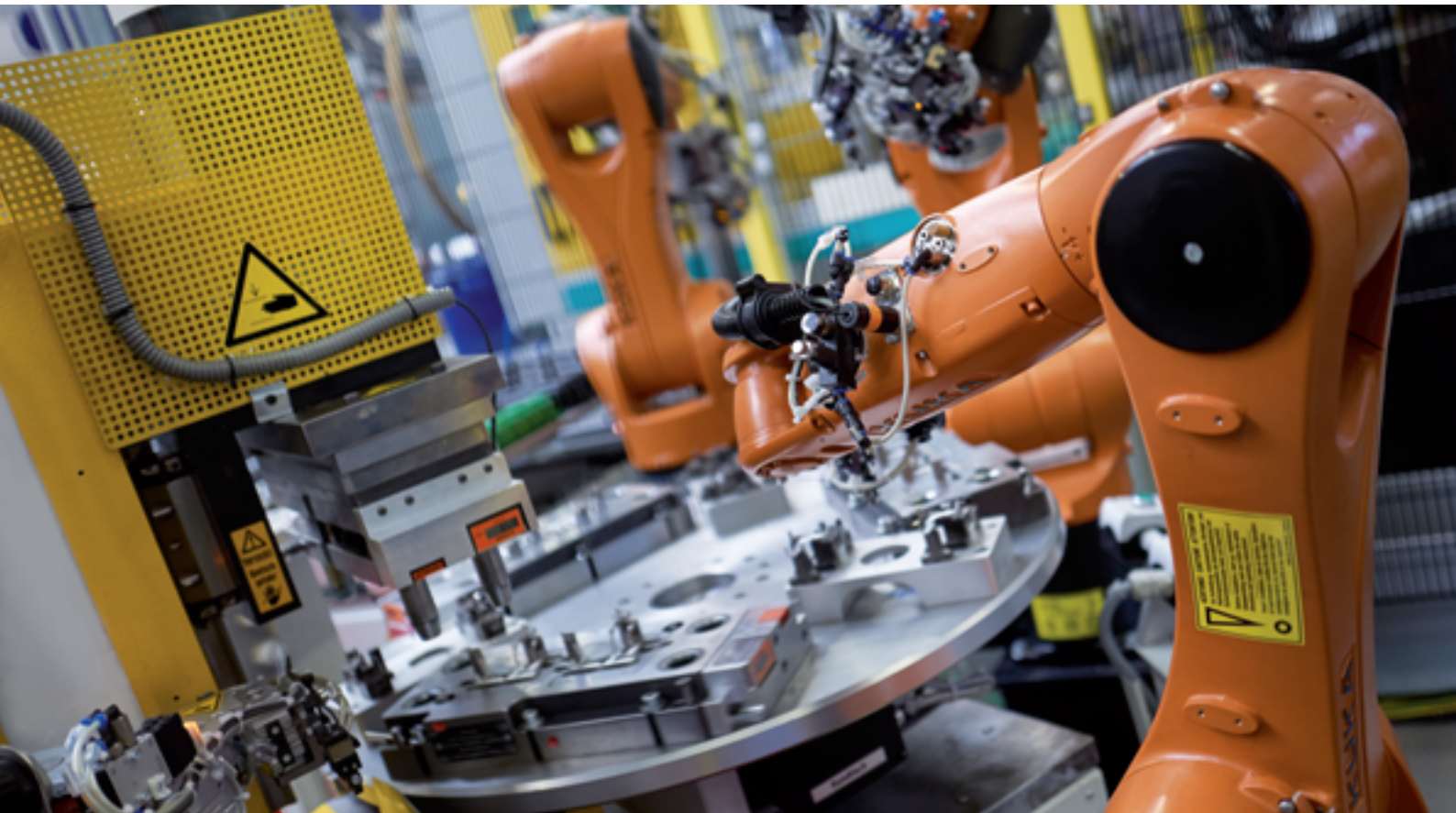
We use simultaneous engineering and are working closely with our customers and partners to obtain the most efficient and reliable solutions. We create samples in order to reach fast production maturity. We offer in-house plating to save time considerably. And we feature our stamped and plated pressfit contacts – pretPin®, allowing solderless connections to electronics.

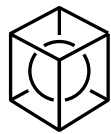
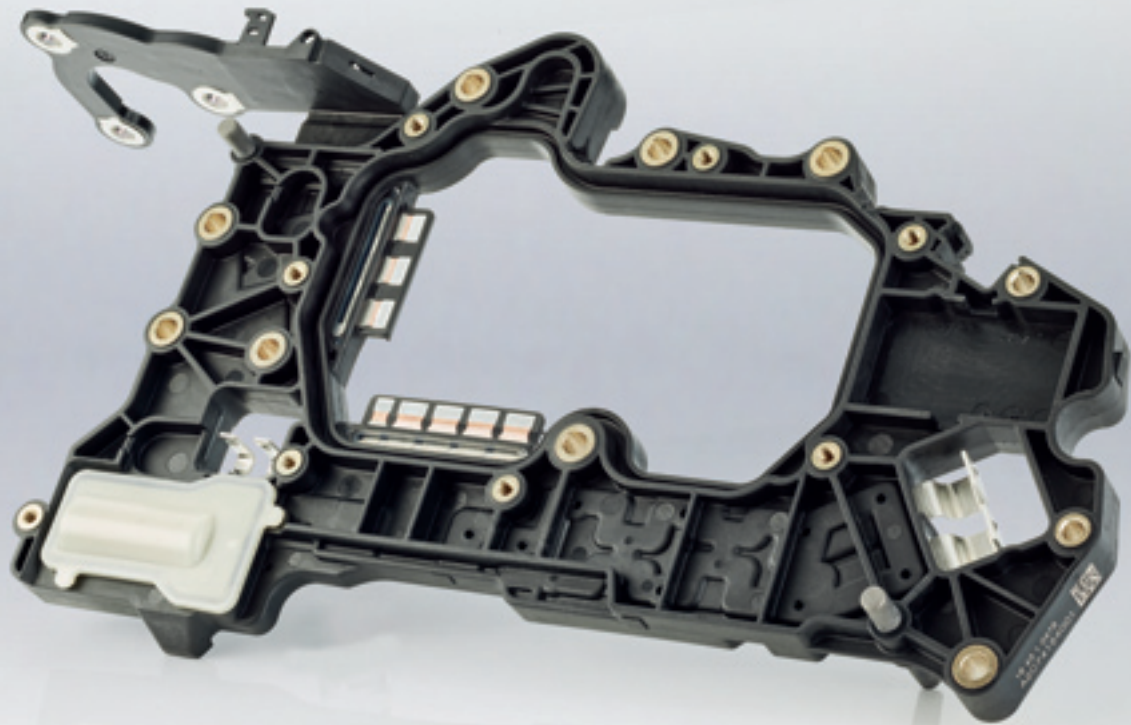
**Possehl Electronics** provides all capabilities and techniques worldwide and invests continuously in further improvements and new developments.

Quality  
Development  
Stamping  
Electroplating  
Etching  
Molding  
Assembling  
Testing  
Toolmaking

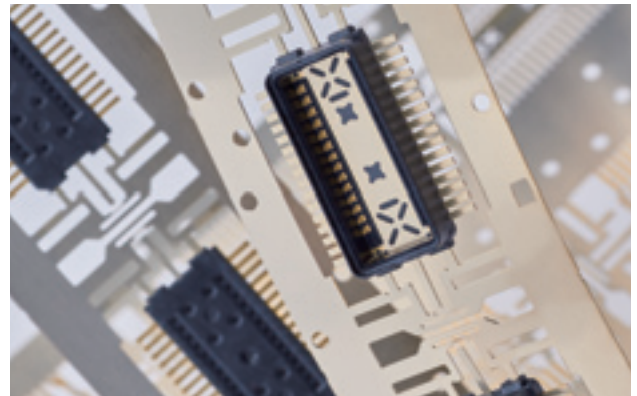


# Possehl Electronics is a One Stop Shop

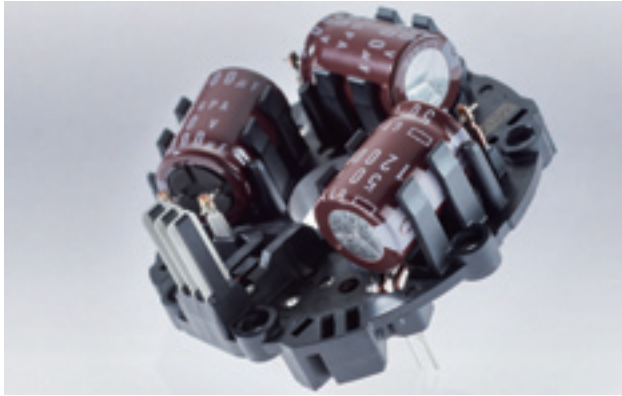




**Possehl  
Electronics**  
is All You  
Need !







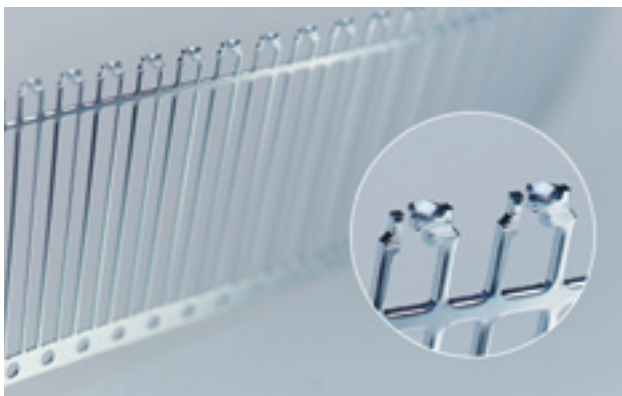
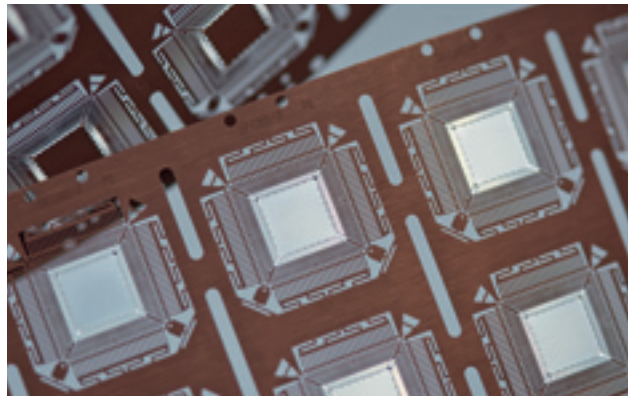
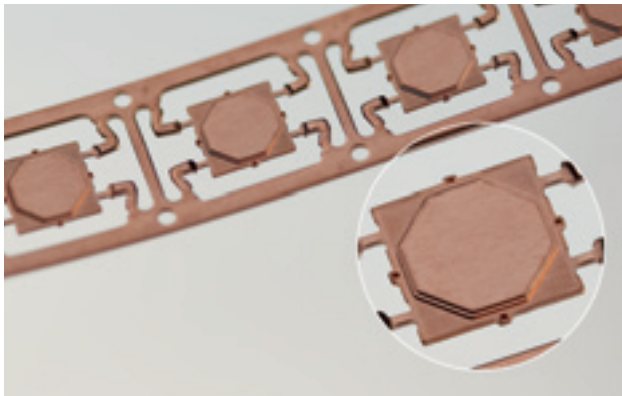
The Possehl Electronics portfolio comprises sophisticated stamping grids, accurately etched outlines, selectively coated surfaces for the semiconductor industry, and complex plastic metal compounds, electronic housings and connectors for the automotive industry.

We use over-molding processes with highest possible numbers of cavities. Our fully automated assembly lines handle dozens of metal inserts with cutting edge technologies. We produce using horizontal and vertical injection molding machines. With our bondable contact surfaces, we are able to reduce the use of precious metals drastically.



To keep pace with new applications and our customers' requirements, we continuously work to improve all our processes and invest significantly in new technologies.

**Possehl Electronics** is a committed, high performing and reliable supplier and strategic partner.



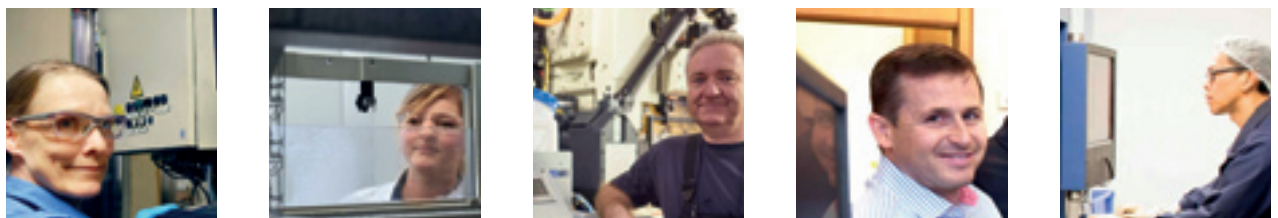
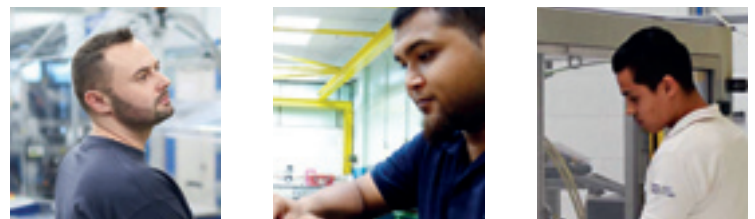


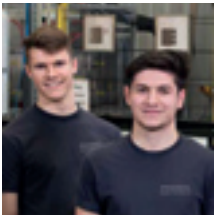
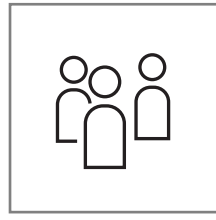
**Our performance is the result of highly educated and motivated employees, who often work with us for many years.**

Entrepreneurial behavior is promoted systematically by short decision-making paths and by consequently encouraging everybody to follow this way of thinking.

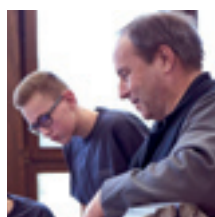
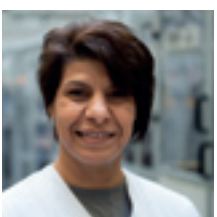
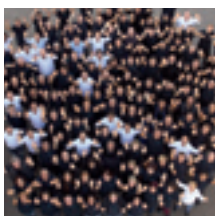
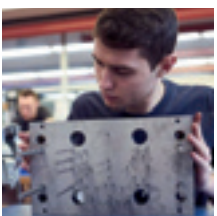
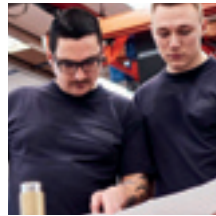
By means of our international presence, with production sites in Europe, Asia and the NAFTA region, we are close to our customers.

**Possehl Electronics stands for long term orientation, reliability, flexibility and is managed in line with Hanseatic traditions.**





We are  
**Possehl**  
**Electronics** –  
 the Precision  
 People !





www.possehlelectronics.de

Global contacts:



**Possehl Electronics**  
The Netherlands, 's-Hertogenbosch



**Possehl Electronics**  
Germany, Niefern



**Possehl Electronics  
Deutschland GmbH**  
Enztalstraße 6  
75223 Niefern  
Tel. +49 7233 69 - 0  
Fax +49 7233 69 - 379  
info@possehlelectronics.de



**Possehl Electronics**  
Germany, Wackersdorf



**Possehl Electronics**  
Czech Republic, Dýšina



**Possehl Electronics**  
France, Roche la Molière



**Dongguan Possehl Electronics**  
P.R. China, Dongguan City



**Possehl Electronics**  
Hong Kong



**Possehl Electronics**  
Malaysia, Melaka



**Possehl Electronics**  
Singapore, Jurong Town



**Possehl Connector Services**  
USA, Rock Hill



**Possehl Electronics**  
Mexico, Puebla

